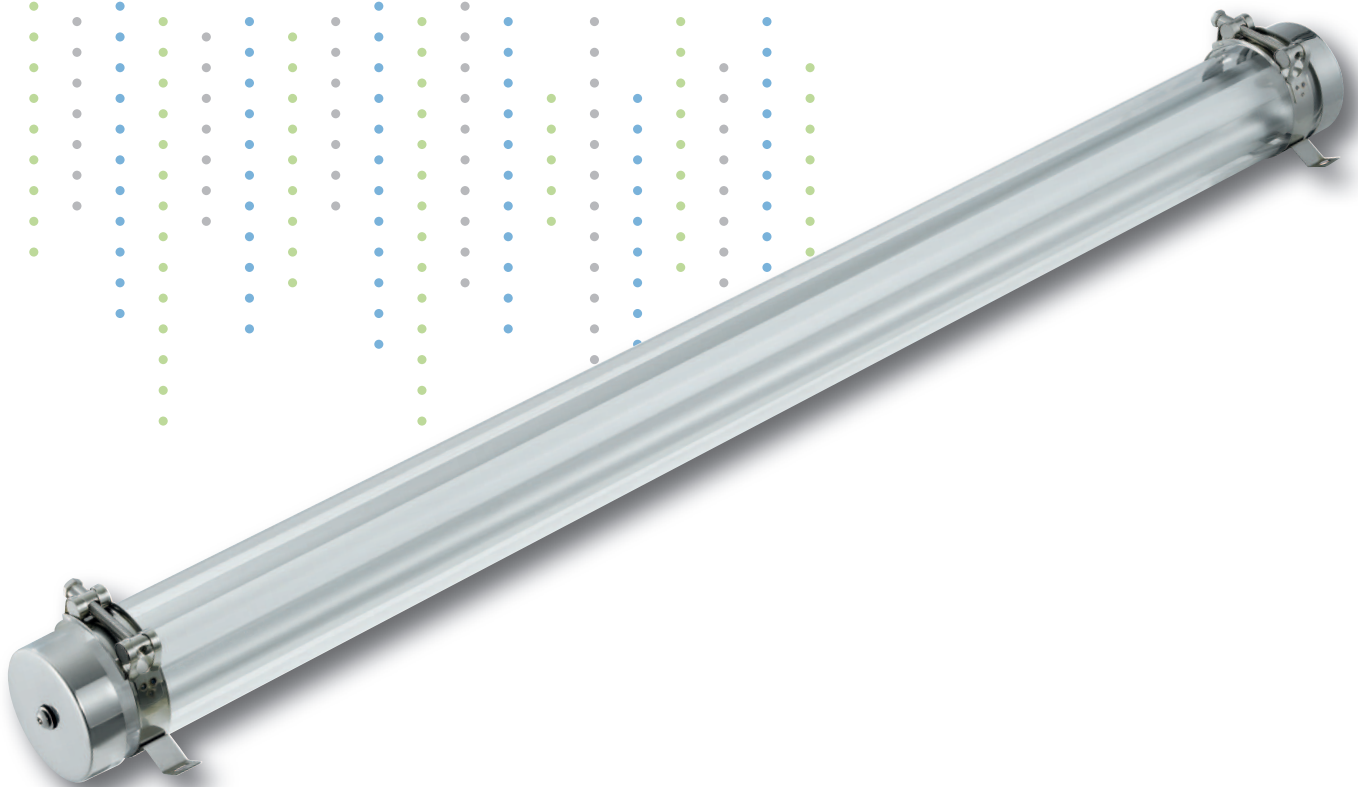




WATERPROOF



Tubular

- **Sealed (IP65) and robust lamp**, ideal for car parks, industries, tunnels, workshops, humid rooms...
- Operating life: **50000 h**
- Very high lighting efficiency: **91.6Lm/W**
- Cylindrical shape makes cleaning easy
- Fastening brackets and prewiring for **fast and easy installation**



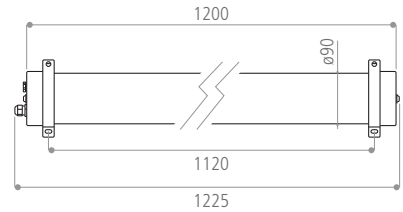
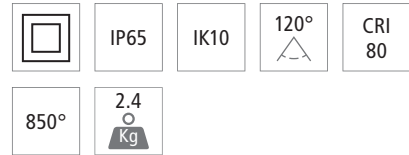
APPLICATION: Industry • Outdoor lighting • ...



Tubular 50W

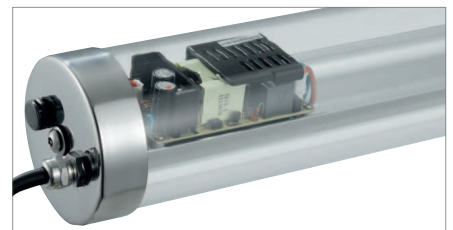
Characteristics:

- **Type:** Waterproof lamp
- **Luminosity:** 4580 Lm (Neutral White)
- **Rated power:** 46W
- **Power consumption:** 50W
- **Power factor** > 0.9
- **Lighting efficiency:** 91.6 Lm/W (Neutral White)
- **Maximum intensity:** 1337 cd (Neutral White)
- **Number of LED:** 117
- **Minimum operating life:** 50 000 h (LM70 → Ta = 25°C)
- **Operating temperature:** -25°C / +40°C
- **Electrical input characteristics:** 230VAC / 230 mA / 50-60 Hz
- **Materials:**
304 stainless steel stirrup bracket and ends
Polycarbonate diffuser
Stainless steel cable gland PG9
- **Colour temperatures:**
4000 Kelvins (Neutral White)
- **Driver included**
Sold with Meanwell driver
Supplied pre-wired with a 1m cable
- **Dimmer option:** no
- **Installation option:**
Wall or ceiling attachment with 2 stainless steel collars
Adjustable centre distance
- **Accessories:** 2 stainless steel collars

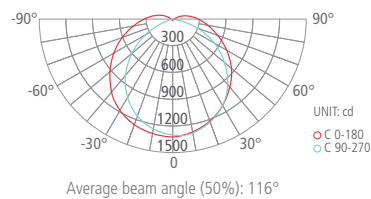


Unit: mm

Details:




Photometry 4000 K:



	461	333	461	lux
1m (ø 2.60m)	461	333	461	
2m (ø 5.21m)	115	83	115	
3m (ø 7.81m)	51	37	51	
4m (ø 10.41m)	29	21	29	
5m (ø 13.00m)	18	13	18	

Angle 104°

REFERENCE	EAN	IP	KELVINS	LUMINOSITY
TBN402254	3 760 179 402 254	65	4000K	4580 Lm



This luminaire contains built-in LED lamps.

A++

A+

A

B

C

D

E


}

L

E

D

The lamps cannot be changed in the luminaire

874/2012 



EMC EN 61000-3-2 / EN 61000-3-3 / EN 550155
 LVD EN 60598-1
 PBS EN 62471

